

# PROAIM

## Universal Backseat Monitor Control System (P-BKST-02)



All rights reserved.

No part of this document may be reproduced, stored in a retrieval system, or transmitted by any form or by any means, electronic, mechanical, photo-copying, recording, or otherwise, except as may be expressly permitted by the applicable copyright statutes or in writing by the Publisher.

# What's In The Box

Please inspect the contents of your shipped package to ensure you have received everything that is listed below.



1 x Rigging Rod (4ft length) (Ø42mm)



1 x Black Anodized Speed Rail (3ft Length) (Ø 16mm)



2 x Rigging Rod 250mm Length (Ø 16mm)



2 x Rigging Rod 180mm Length (Ø 16mm)



4 x Standoff pins



2 x Round Cheese plate  
2 x Houdini Speed rail Clamp



4 x O Rings Black  
8 x 14x 18



2 x Universal Headrest Mount



4 x Rigging Rod Clamps



4 x 360° Houdini Rod Clamps



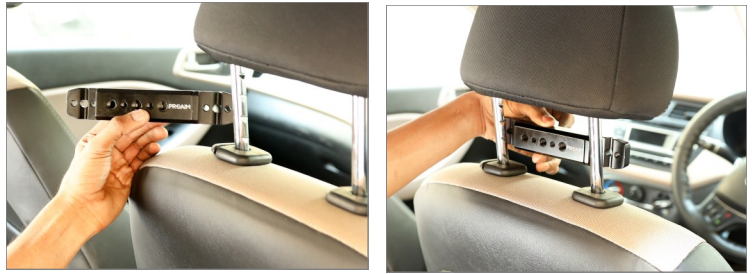
1 x 360° Houdini Speed rail  
Rod Clamp



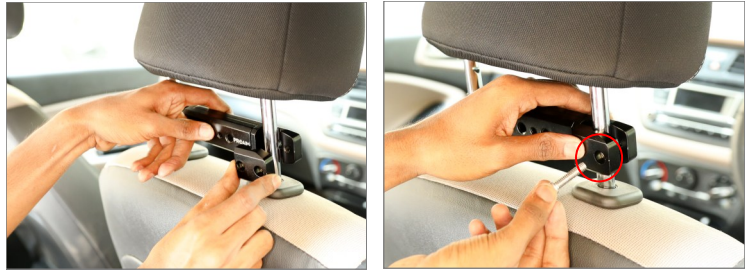
4 x L-Type Allen Key  
Size:- 3/16", 5/16", 7/32", 5mm

## Universal Backseat Setup

- Place the universal headrest mount on the back seat as shown in the image.



- Insert a bolt to fix it properly.



- Tighten the headrest properly using a 3/16" Allen key.
- Repeat the same steps on the other side.



- Insert two standoff pins into the Universal headrest mount, aligning them with the threads.



- Attach the round cheese plate over the stand-off pins and insert the Allen CSK bolt.



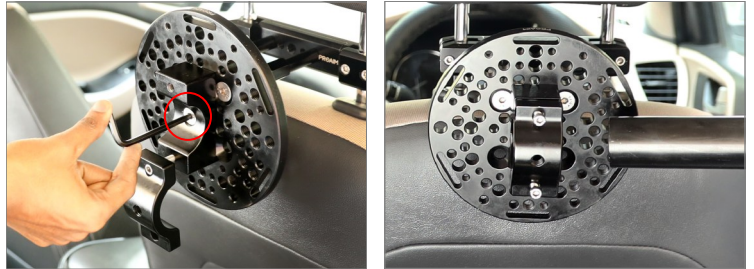
- Tighten the CSK bolt using the 7/32" Allen key.
- Note:** The cheese plate has multiple threads and holes for quick and easy mounting.



- Mount the Houdini speed rail clamp onto the cheese plate and insert the bolt.



- Tighten the inserted bolt with a 7/32" Allen key.
- Slide the 4ft rigging rod into the clamp.



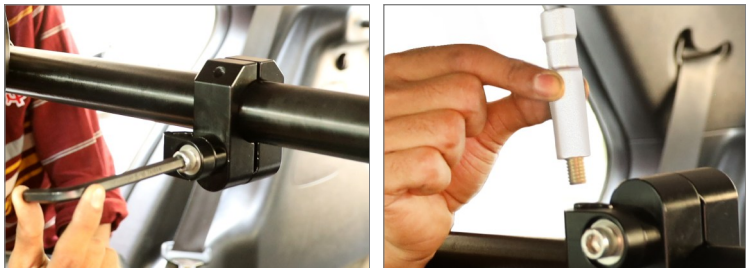
- Now, pass the 4ft rigging rod through both Houdini clamps.



- Tighten the bolts securely with the 5mm Allen key.
- Attach the 360° Houdini speed rail rod clamp at the center of the 4ft rod.



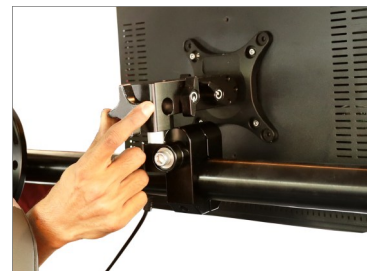
- Secure the clamp with the 5/16" Allen key, then place the baby pin into the clamp.



- Tighten and secure it using the 5/16" Allen key.



- Mount the monitor onto the baby pin and secure it with the knob



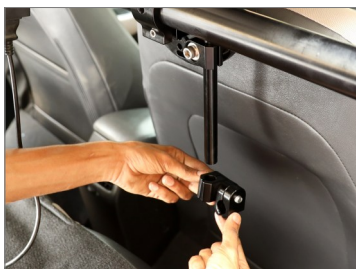
- Attach a rigging rod clamp to the cheese plate, align it with the threads, and tighten using the 5/16" Allen key.



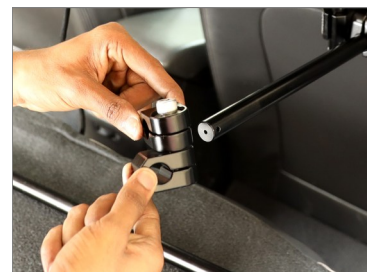
- Insert the 180mm rigging rod and secure it with the same key.



- Insert a 360° Houdini clamp onto the 180mm rig.
- Tighten with the 5/16" Allen key and insert a 250mm rigging rod



- Attach another 360° Houdini rod clamp onto the 250mm rod and tighten.



- Insert the 3ft black anodized speed rail into the 360° Houdini rod clamp.
- Secure with the 5/16" Allen key.



- Your backseat system is now fully assembled, as shown in the image



**Note:** The setup is entirely modular and adjustable. You can position your monitor, LCD, wheels, joysticks, or a control device in any configuration behind the front seat, so you can focus fully on your creative cinematic shots.



## YOUR PROAIM UNIVERSAL BACKSEAT MONITOR CONTROL SYSTEM ALL DRESSED UP AND READY TO GO!



(SHOWN WITH OPTIONAL ACCESSORIES)

**Warranty:** We offer one year warranty for our products from date of purchase. Within this period of time, we will repair it without charge for labor or parts. Warranty doesn't cover transportation costs nor does it cover a product subjected to misuse or accidental damage. Warranty repairs are subjected to inspection and evaluation by us.

**Liability:** We are not liable for damage caused by products that we do not supply or from mishandling in transit, accident, misuse, neglect, lack of care of the product, or service by anyone other than our company.

**Contact Us:** In case of any kind of dissatisfaction, please Contact us immediately and we promise our utmost support and care until you use our product.