



## Lineo Portable Video Camera Floor Dolly (P-PRT-D)

### Assembly Manual



### What's In The Box

Please inspect the contents of your shipped package to ensure you have received everything that is listed below.



Portable Dolly

---

All rights reserved.

No part of this document may be reproduced, stored in a retrieval system, or transmitted by any form or by any means, electronic, mechanical, photo-copying, recording, or otherwise, except as may be expressly permitted by the applicable copyright statutes or in writing by the Publisher.



## Safety Guidelines

**ATTENTION: PLEASE READ THIS BEFORE USING TO PREVENT SERIOUS DAMAGE TO THE GEAR!**

- Inspect the Dolly before each use. This helps in the early detection of any signs of wear or damage, ensuring your safety and the longevity of the equipment. **NOTE:** Do not use it if any parts are damaged or malfunctioning.
- Ensure the Dolly is not overloaded. Adhere to the maximum load capacity as specified in the manual to prevent tipping or damage.
- Distribute weight evenly on the dolly to maintain stability. Uneven loads can cause the dolly to tip over.
- Set up the dolly on a level surface to prevent the dolly from tipping or derailing.
- Ensure that the tripod, all equipment and accessories are securely attached to the dolly to prevent accidents.
- Ensure that all locking mechanisms are properly engaged.

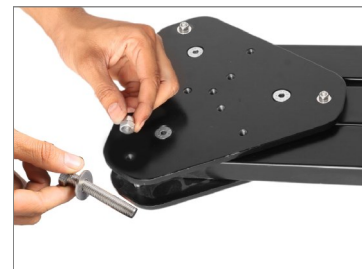
## Portable Dolly Setup

### Portable Dolly Assembly

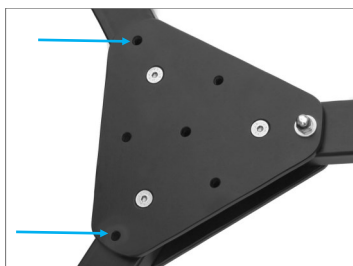
- Loosen the Bolt of the Portable Dolly using the 13mm spanner (Not Included).



- Remove the Bolt nut, washer, and Bolt.



- Repeat the same steps to remove the Bolts from the other side of the Dolly.



- Stretch out its legs and open the Dolly.



- After opening the Dolly, re-insert all the Bolts, washers, and Bolt nuts.



- Re-tighten all the Bolt nuts using the 13mm spanner.

**NOTE:** The three center bolts will not be removed while opening the Dolly.



- Mount your setup onto the dolly.
- Now your setup is ready to use.



## YOUR PROAIM LINO PORTABLE VIDEO CAMERA FLOOR DOLLY ALL DRESSED UP AND READY TO GO!



(SHOWN WITH OPTIONAL ACCESSORIES)

**Warranty:** We offer one year warranty for our products from date of purchase. Within this period of time, we will repair it without charge for labor or parts. Warranty doesn't cover transportation costs nor does it cover a product subjected to misuse or accidental damage. Warranty repairs are subjected to inspection and evaluation by us.

**Liability:** We are not liable for damage caused by products that we do not supply or from mishandling in transit, accident, misuse, neglect, lack of care of the product, or service by anyone other than our company.

**Contact Us:** In case of any kind of dissatisfaction, please Contact us immediately and we promise our utmost support and care until you use our product.