

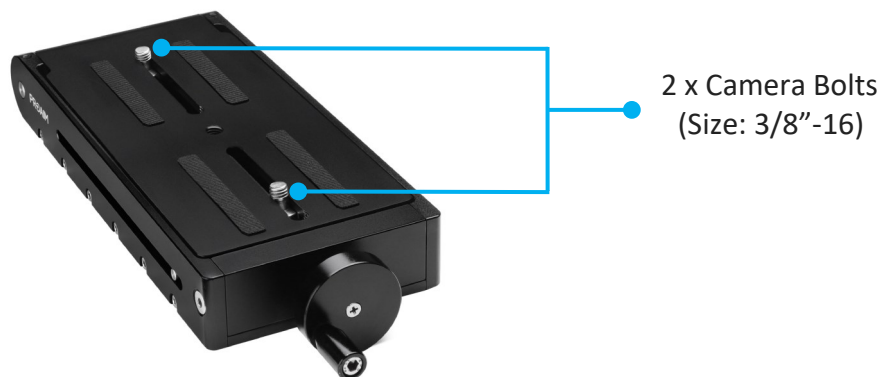
PR[→]AIM MicroTilt Wedge Camera Plate (P-MTWP-01)

Assembly Manual



■ What's In The Box

Please inspect the contents of your shipped package to ensure you have received everything that is listed below.



MicroTilt Wedge Camera Plate

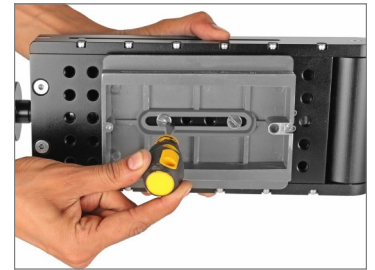
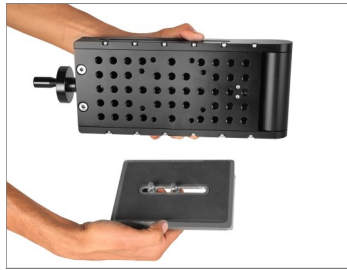
All rights reserved.

No part of this document may be reproduced, stored in a retrieval system, or transmitted by any form or by any means, electronic, mechanical, photo-copying, recording, or otherwise, except as may be expressly permitted by the applicable copyright statutes or in writing by the Publisher.

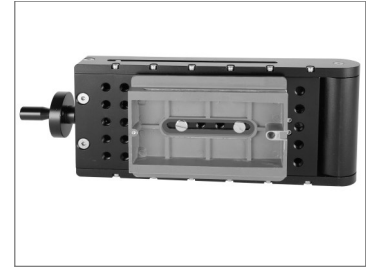
MicroTilt Wedge Camera Plate Setup

Attach Camera Plate to MicroTilt Wedge Camera Plate

- Attach the camera plate (**Not Included**) to the wedge plate and tighten it with a screwdriver (**Not Included**).



- The camera plate is now securely attached.



Mounting Fluid Head on Stand

- Remove the castle ring from the fluid head (**Not Included**) and mount it on the stand (**Not Included**).



- Once the fluid Head is mounted, tighten the castle ring securely.



Slide Micro Tilt Wedge Camera Plate to Fluid Head

- Slide the wedge plate with the camera plate onto the fluid head, as shown in the image.
- Once in place, securely lock the wedge plate onto the fluid head.



Auto lock Technology

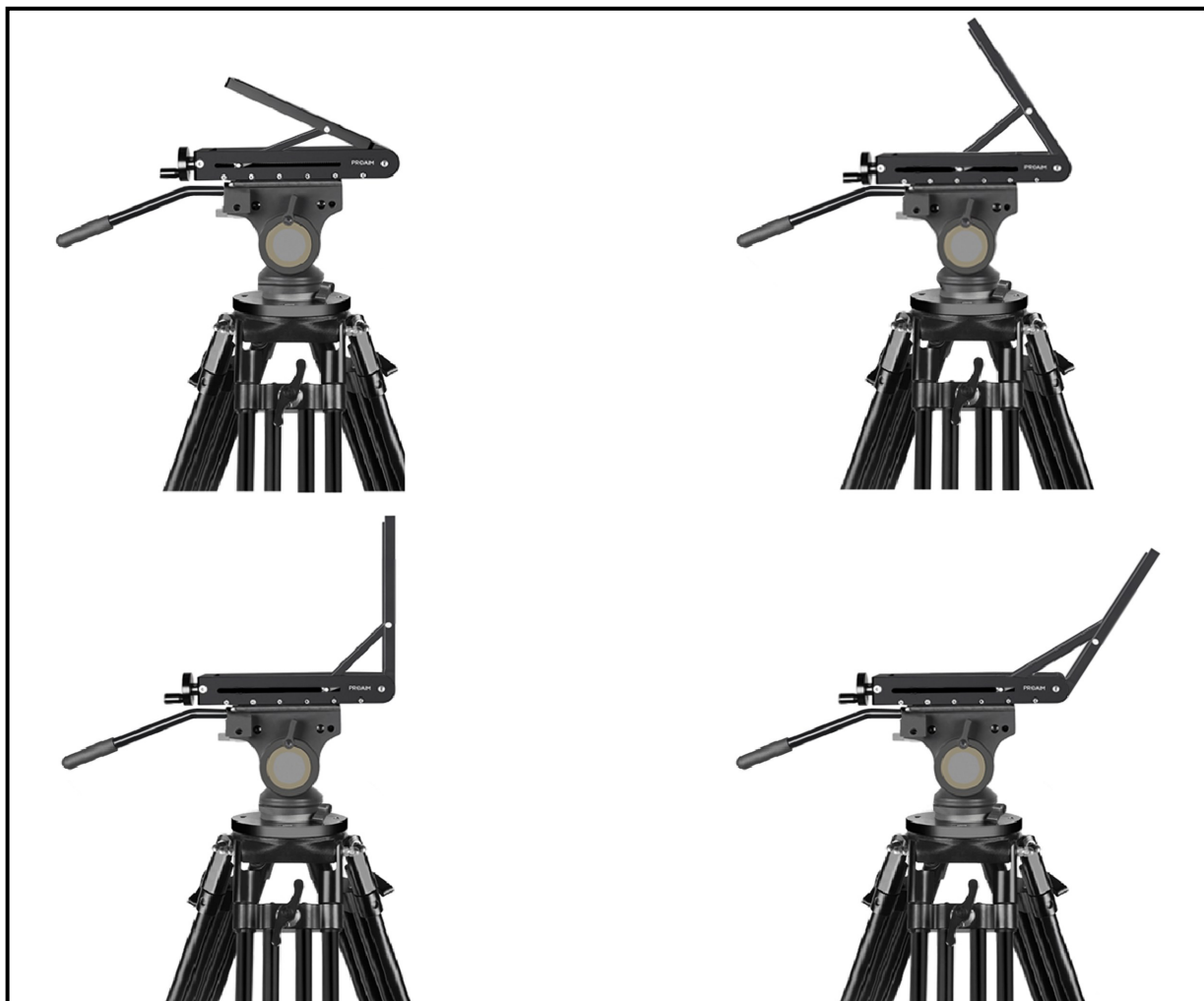
- Rotate the handle of the wedge plate to open it and set it to your desired position.



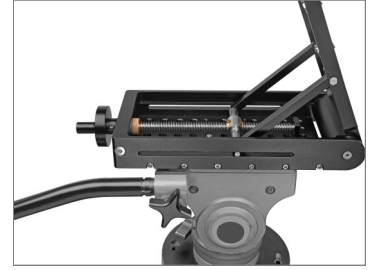
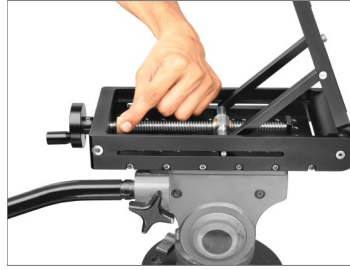
Feature: The MicroTilt Wedge Plate secures your camera at any tilt angle between 0° and 106°, holding it firmly in place without drift or slippage.



0° to 106° Range



- After setting the wedge plate to the desired position, lock it securely with the ring lock.



Double Lock Security

Extra Stability with Secure Ring Lock

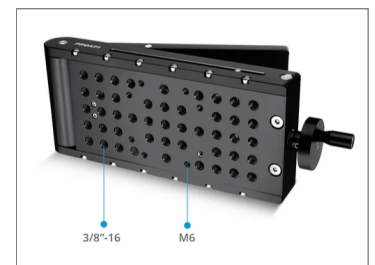
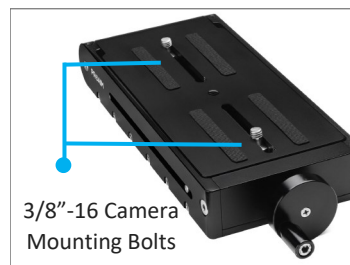


Quick Release Camera Base Plate Mounting

- Mount the quick release plate (**Not Included**) onto the wedge plate by aligning the holes with the bolts.
- Then, tighten the bolts using a screwdriver (**Not Included**).



Feature: Featuring industry-standard 3/8"-16 and M6 tripod mounting threads and 3/8"-16 camera mounting bolts.



Camera Mounting

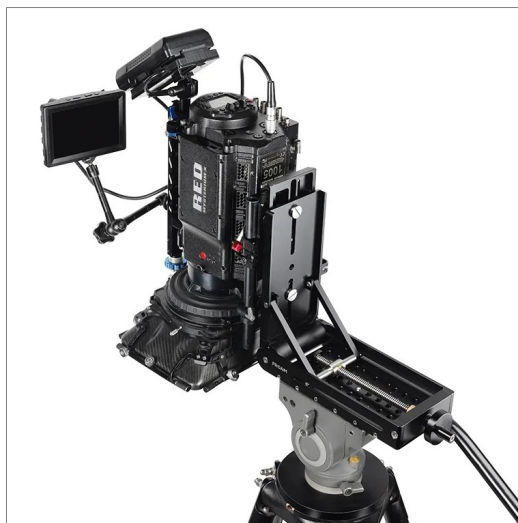
- Slide the camera (**Not Included**) onto the quick release plate and secure it with the locking knob.



- The camera is securely attached, and your setup is now ready for use.



Capture Low & High-Angle Shots



**YOUR PROAIM MICROTILT WEDGE CAMERA PLATE
ALL DRESSED UP AND READY TO GO!**



(SHOWN WITH OPTIONAL ACCESSORIES)

Warranty: We offer one year warranty for our products from date of purchase. Within this period of time, we will repair it without charge for labor or parts. Warranty doesn't cover transportation costs nor does it cover a product subjected to misuse or accidental damage. Warranty repairs are subjected to inspection and evaluation by us.

Liability: We are not liable for damage caused by products that we do not supply or from mishandling in transit, accident, misuse, neglect, lack of care of the product, or service by anyone other than our company.

Contact Us: In case of any kind of dissatisfaction, please Contact us immediately and we promise our utmost support and care until you use our product.