

# PROAIM

## Handheld Star Ring for Gimbal Camera Stabilizers & Flowline Rigs (P-STRG-01)



---

All rights reserved.

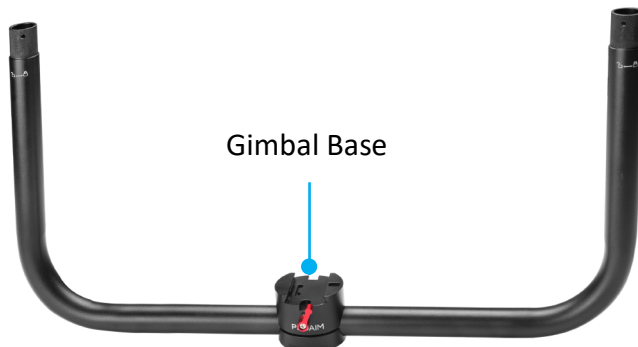
No part of this document may be reproduced, stored in a retrieval system, or transmitted by any form or by any means, electronic, mechanical, photo-copying, recording, or otherwise, except as may be expressly permitted by the applicable copyright statutes or in writing by the Publisher.

## ■ What's In The Box

Please inspect the contents of your shipped package to ensure you have received everything that is listed below.



Top Grip



Gimbal Base

Bottom Grip



2 x Rubber Handles



2 x Gear Ring Adapters



2 x Support Base Feet



Quick Release Base Plate



3mm Allen Key



Carrying Case

# Parts of Star Ring



## ■ Handheld Star Ring Setup

### Support Base Foot Mounting

- Loosen both screws of the support base foot using a 3mm Allen key and remove them.



- Loosen both screws of the support base foot and remove them using a 3mm Allen key.



### Bottom Grip Mounting

- Attach the support base foot to the bottom grip. Insert the plate.



- Insert both screws and tighten them using a 3mm Allen key.
- The Bottom grip mount is now properly attached.



- Repeat the same process to attach the other support base foot.

**Feature:** Two Support Feet allow for setting down the ring on flat ground without worrying about it falling.



## Rubber Handles Mounting on Bottom Grip

- Rotate the rubber handle counterclockwise (right to left) to loosen it and mount it on the bottom grip.

**Feature:** The rubber on the handgrips provide a firm grip and prevents sliding.



- Next, Rotate the handle clockwise (left to right) to tighten it.
- Repeat the process to attach the second rubber handle.

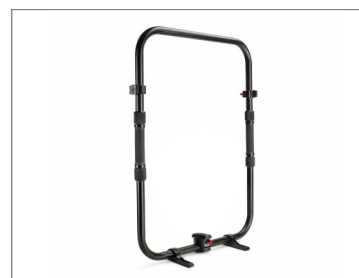


## Top Grip Mounting on Rubber Handles

- Rotate the rubber handle clockwise (left to right) to loosen it, then mount the top grip onto it.



- Now, rotate the rubber handle counterclockwise (right to left) to tighten it securely.
- Repeat the process to mount the top grip onto the other rubber handle and tighten it securely



## Gear Ring Mounting Adapter

- Loosen the ratchet knob and open the adapter.

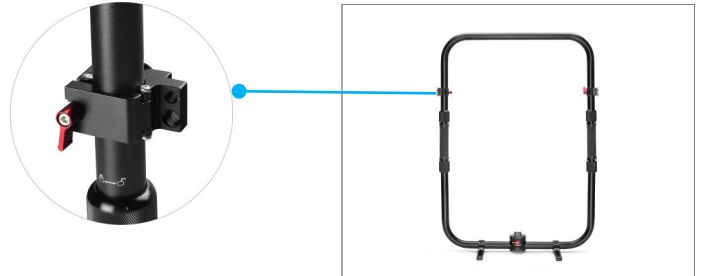


- Attach the gear ring adapter to the top grip, then tighten the ratchet knob to secure it.

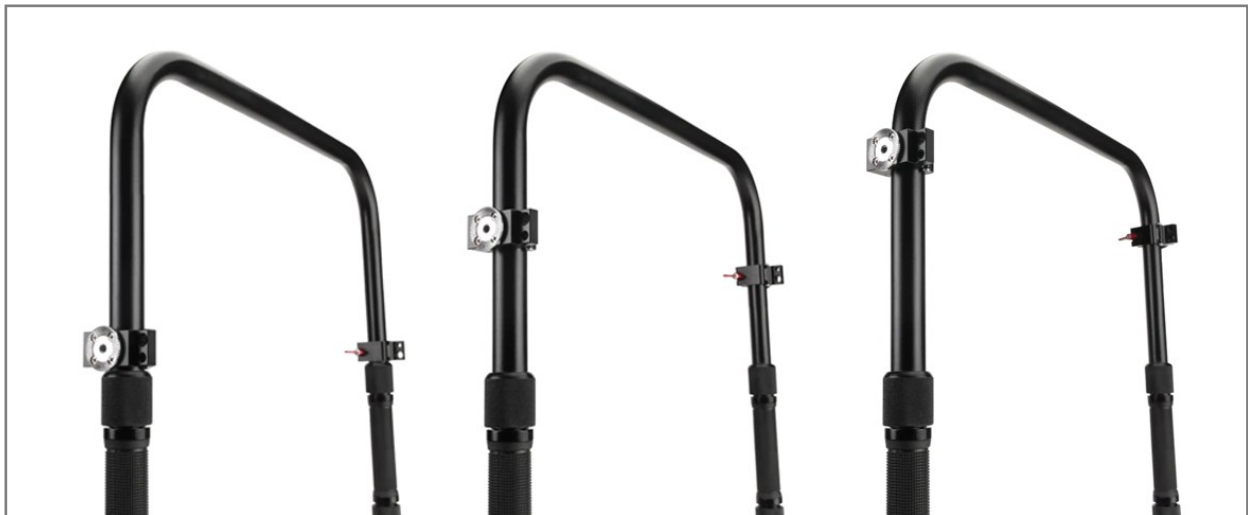


- Repeat the process to attach the other gear ring adapter.

**NOTE:** You can adjust the height of the gear ring adapter according to your convenience.



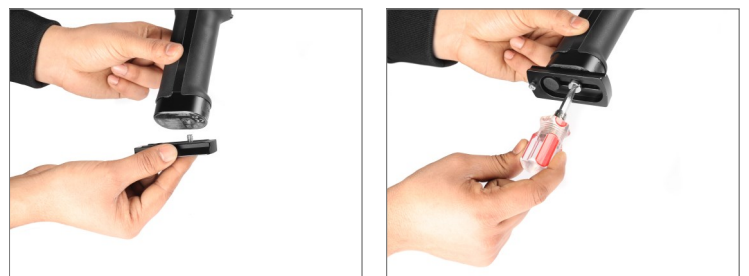
## Gear Ring Mounting Adapter Height Adjustment



## Quick Release Base Plate Mounting

- Attach the quick-release base plate to the Ronin (Not included).
- Secure it by tightening the bolt using a screwdriver (Not included).

**Feature:** The plate works with most gimbals with a 3/8"-16 & 1/4"-20 threaded mount on their base.



## Gimbal Mounting

- Loosen the gimbal base screw using a 3mm Allen key to stabilize the position of the gimbal base.



- Loosen the knob on the gimbal base and slide the Ronin (Not included) into place.
- Tighten the knob to secure the Ronin in position.

**Feature:** It is Compatible with ZHIYUN CRANE 3S/2S, RONIN S & RS 2, MOZA AIR 2, and Feiyu gimbals.



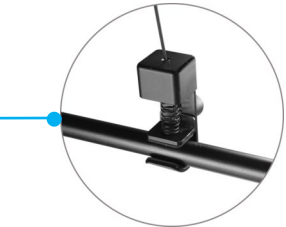
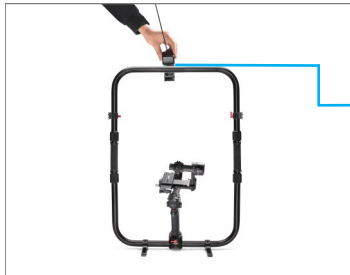
- Your gimbal is now properly mounted.
- Now, attach the camera (Not Included) to the Ronin.

**Feature:** Proaim Star Ring allows you more stability and control over your 2 Axis & 3 Axis Gimbals during handheld shooting.



## Hook Mounting

- Mount the Flycam Flowline hook onto the top grip and tighten with the provided knob for a secure, slip-free connection (as shown in the image).



- Now your setup is ready to use.



## YOUR PROAIM HANDHELD STAR RING ALL DRESSED UP AND READY TO GO!



(SHOWN WITH OPTIONAL ACCESSORIES)

**Warranty:** We offer one year warranty for our products from date of purchase. Within this period of time, we will repair it without charge for labor or parts. Warranty doesn't cover transportation costs nor does it cover a product subjected to misuse or accidental damage. Warranty repairs are subjected to inspection and evaluation by us.

**Liability:** We are not liable for damage caused by products that we do not supply or from mishandling in transit, accident, misuse, neglect, lack of care of the product, or service by anyone other than our company.

**Contact Us:** In case of any kind of dissatisfaction, please Contact us immediately and we promise our utmost support and care until you use our product.