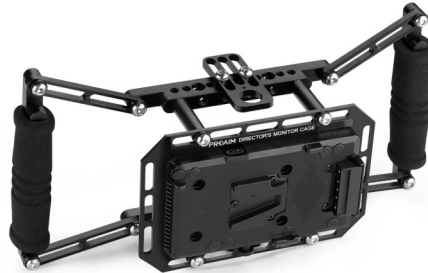
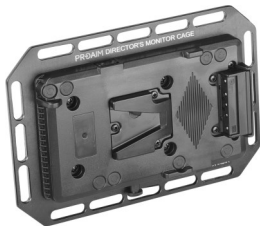


Assembly Manual



What's In The Box

Please inspect the contents of your shipped package to ensure you have received everything that is listed below.



Director's Monitor Cage



4 x Posts



2 x Offset Brackets



2 x Main Brackets



4 x Side Brackets



Neck Strap



2 x Handles



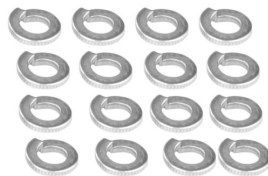
14 x Button Heads
(Size: 1/4" x 5/8")



8 x Button Heads
(Size: 1/4" x 3/8")



4 x Button Heads
(Size: 1/4"-2")



16 x Spring Washers
(Size: 6mm)



4 x Washers
(Size: 6x10x1mm)



1 x L-Type Allen Key
(Size: 4mm)

All rights reserved.

No part of this document may be reproduced, stored in a retrieval system, or transmitted by any form or by any means, electronic, mechanical, photo-copying, recording, or otherwise, except as may be expressly permitted by the applicable copyright statutes or in writing by the Publisher.

Director's Cage Setup

Director's Monitor Cage Assembly

- Insert the (6mm) spring washer into the (1/4"-2") Button Heads and insert it into the Director's Monitor Cage, as shown in the image.



- Now, insert the post into the button Head.



- Repeat the same step to insert the remaining button heads and posts.



Main Bracket Assembly

- Insert the button Heads into the main bracket aligning with the threads.



- Tighten the bolts using the 4mm Allen key.
- First Main Bracket is securely attached to the Director's Monitor cage Plate.



- Repeat the same step for attaching the second Main Bracket.

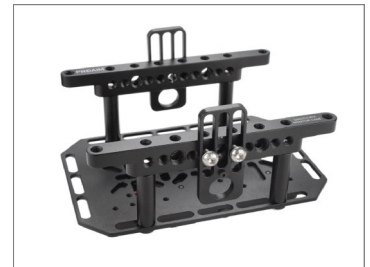


Offset Bracket Assembly

- Mount the Offset Bracket on the Main Bracket and insert the (1/4" x 3/8") button head aligning with the threads.



- Tighten the button heads using the 4mm Allen Key.
- Repeat the same step for attaching the second Offset Bracket.



Side Bracket Assembly

- Attach the Side bracket to the main bracket and insert the (1/4" x 5/8") button head.



- After inserting the button head, tighten it using the 4mm Allen Key.



- Repeat the same step for attaching the other Side Brackets.



Handle Assembly

- Attach the handle to the Side Bracket and insert the (1/4" x 5/8") button head & spring washer.

NOTE: To attach the Handle, loosen the button head of the Side Bracket as needed and adjust the side Bracket per your requirement.

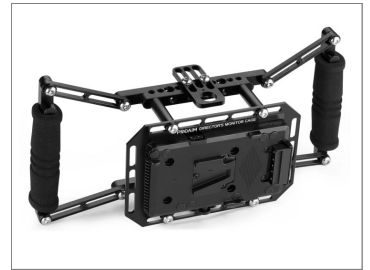


- After inserting the button head tighten it using the 4mm Allen Key.

Feature: It has soft-grip foam handles, which make the cage a lot easier to hold.



- Repeat the same step to attach the other Handle
- The handles are securely attached.



Battery Mounting

- Attach the V-Mount Battery (Not Included) to the Director's Monitor Cage.



Screen Setup

- Loosen the button head using the 4mm Allen Key and remove it.



- Remove the Bolt and the Post.
- Repeat the same step to remove the other bolt and post

NOTE: To mount the screen, remove bolts and post , from one Main Bracket only.



- Mount the Screen (Not Included) on the Director's Monitor Cage and insert the button head into the Screen by aligning with the threads.



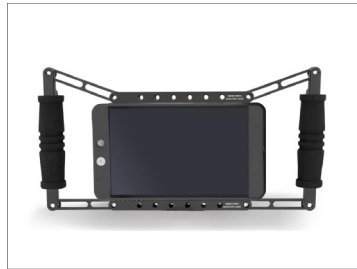
- Tighten the bolt using the 4mm Allen Key.



- After mounting the Screen, tighten the button head using the 4mm Allen Key.
- The Screen is securely mounted on the Director's Monitor Cage.



Feature: Director's Monitor Cage has a perfect modular armor for monitors ranging between 4" to 7".



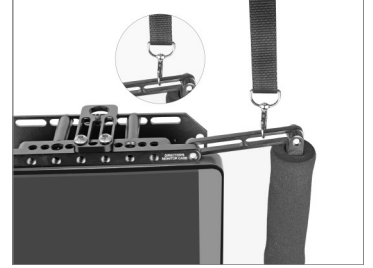
- Insert and tighten the bolt using the Allen Key.
- Repeat the same step to insert the second bolt.



Neck Strap Assembly

- Attach the hook of the Neck strap to the Side Bracket.

Feature: The included neck strap helps keep you fatigue-free while walking/running with the cage.

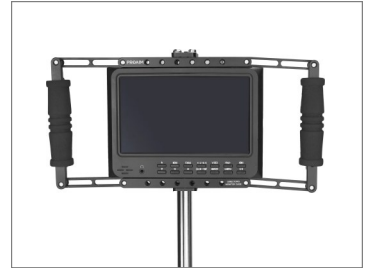


- You can easily adjust the strap length using the buckle to suit your convenience and setup requirements.
- Repeat the same step to attach the second end of the neck strap to another side.



C-Stand Setup

- Mount the Director's Monitor Cage onto the Stand (**Not Included**).



Feature: You can mount the cage on any C-stand or Tripod.



**YOUR PROAIM DIRECTOR'S CAGE FOR 4"-7" LCD CAMERA MONITORS
ALL DRESSED UP AND READY TO GO!**



(SHOWN WITH OPTIONAL ACCESSORIES)

Warranty: We offer one year warranty for our products from date of purchase. Within this period of time, we will repair it without charge for labor or parts. Warranty doesn't cover transportation costs nor does it cover a product subjected to misuse or accidental damage. Warranty repairs are subjected to inspection and evaluation by us.

Liability: We are not liable for damage caused by products that we do not supply or from mishandling in transit, accident, misuse, neglect, lack of care of the product, or service by anyone other than our company.

Contact Us: In case of any kind of dissatisfaction, please Contact us immediately and we promise our utmost support and care until you use our product.