



D-33 Portable Camera Tripod Dolly for Jibs/Cranes (D-33)



All rights reserved.

No part of this document may be reproduced, stored in a retrieval system, or transmitted by any form or by any means, electronic, mechanical, photo-copying, recording, or otherwise, except as may be expressly permitted by the applicable copyright statutes or in writing by the Publisher.

What's In The Box

Please inspect the contents of your shipped package to ensure you have received everything that is listed below.



D-33 Dolly



3 x Tripod Holders



17mm Spanner



5mm T-Type Allen Key

Dimensions:



D-33 Dolly Setup

D-33 Dolly Assembly

- Loosen the side bolt of the D-33 Camera Dolly using the 17mm spanner.

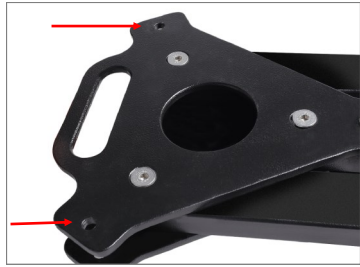
NOTE: This dolly has various holes for flexible Tripod mounting.



- Remove the Bolt nut, washer and Bolt.



- Repeat the same steps to remove the side Bolt from the other side of the Dolly.



- Stretch out the legs of the Dolly and open it.



- After opening the Dolly, re- insert the Bolt, washer and Bolt nut.



- Tighten the Bolt nut using the 17mm spanner.
- Repeat the same step to re-insert the side Bolt on the other side of the Dolly.

NOTE: The centre bolt will not be removed while opening the Dolly.

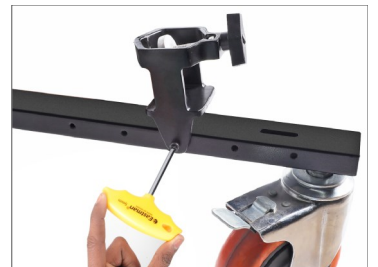


Tripod Holders Assembly

- Remove the Allen bolt from the Tripod holder using a 5mm T-Type Allen key and mount the holder on the Dolly.

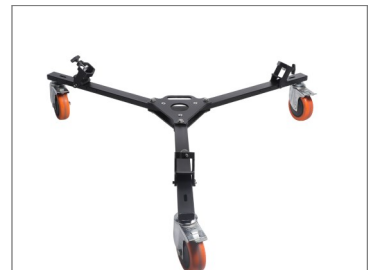


- Carefully align the holes of the Tripod holder with the Dolly, insert an Allen bolt, and re-tighten it using a 5mm T-Type Allen key.



- Repeat the same step to mount the remaining tripod holders.

FEATURE: The position of the Tripod Holder can be adjusted to accommodate the Tripod legs.



Gravity Stand Mounting on D-33 Dolly

- Loosen all the knobs of the tripod holder and securely place the Gravity Stand (Not Included) in them.



- Tighten all the knobs of tripod holder after mounting the Gravity stand.

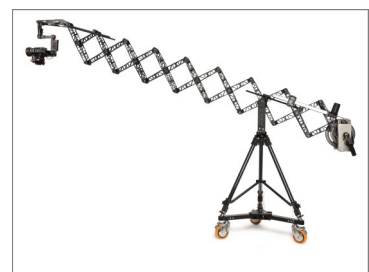


■ Scissor Telescopic Camera Jib Crane Setup

- Place the Scissor (Not Included) Jib with Hub Mounting on top of the Gravity stand.
- Insert the Hub locking knob in the bottom of the Hub mounting and tighten it securely.



NOTE: Boasting a maximum payload of 400 kg/880lb, this dolly empowers you to confidently mount your equipment for ultimate filming convenience.



**YOUR PROAIM D-33 PORTABLE CAMERA TRIPOD DOLLY
ALL DRESSED UP AND READY TO GO!**



(SHOWN WITH OPTIONAL ACCESSORIES)

Warranty: We offer a one-year warranty for our products from the date of purchase. Within this period, we will repair it without charge for labor or parts. The warranty doesn't cover transportation costs, nor does it cover a product subjected to misuse or accidental damage. Warranty repairs are subject to inspection and evaluation by us.

Liability: We are not liable for damage caused by products we do not supply or from mishandling in transit, accident, misuse, neglect, or lack of care of the product or service by anyone other than our company.

Contact Us: If you are dissatisfied, please contact us immediately. We promise our utmost support and care until you use our product.