



## Cam Tower Stand w Counterbalance (P-CTST-01)



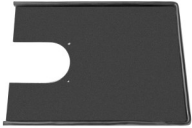
---

All rights reserved.

No part of this document may be reproduced, stored in a retrieval system, or transmitted by any form or by any means, electronic, mechanical, photo-copying, recording, or otherwise, except as may be expressly permitted by the applicable copyright statutes or in writing by the Publisher.

## What's In The Box

Please inspect the contents of your shipped package to ensure you have received everything that is listed below.



Accessory Tray



Cam Tower Stand w/ Counterbalance



Platform Section -1 with Locking Pivot Wheel



Platform Section-2 with Locking Pivot Wheels



Camera Support Platform



2 x Screws



1x Spanner (Size:-17mm)



2x Allen Keys T-Type  
(Size:-3/16'' & 4mm)

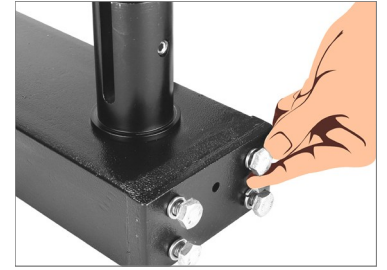
# INDEX

<b>Sr. No</b>	<b>Particulars</b>	<b>Page No.</b>
1	Cam Tower Stand Setup	4
2	Platform Section -1 Assembly	4
3	Platform Section -2 Assembly	4
4	Counterbalanced Tower Setup	5
5	Camera Support Platform Assembly	5
6	Accessory Tray Mounting	5-6
7	Camera Support Platform Adjustment	6
8	Final Setup	7

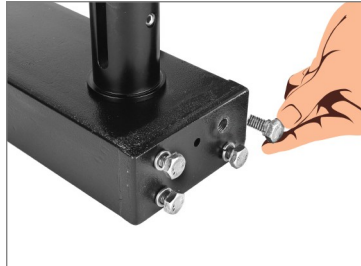
## Cam Tower Stand Setup

### Platform Section -1 Assembly

- Loosen all the screws on Platform Section 1, as shown in the image.

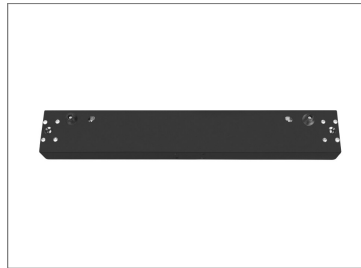


- Once fully loosened, remove all the screws.



### Platform Section-2 Assembly

- Attach Platform Section-2 to Platform Section -1.



- Reinsert the removed screws to secure both sections and tighten firmly using a 17mm spanner.



- Carefully place the assembled platform onto its Locking pivot wheels.

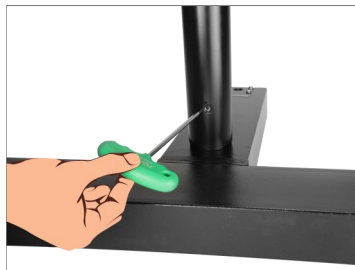


## Counterbalanced Tower Setup

- Now mount tower stand on platform rod.



- Secure the tower stand with the help of provided Allen key (Size:3/16”).



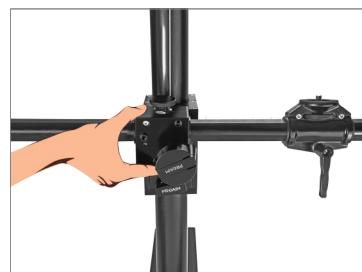
- Loosening the knob allows the internal Counterweight to move freely, enabling smooth vertical motion of the camera Platform.

**Note:** This knob secures the internal Counterweight during transport. Loosen fully camera platform to allow smooth up-and-down movement.

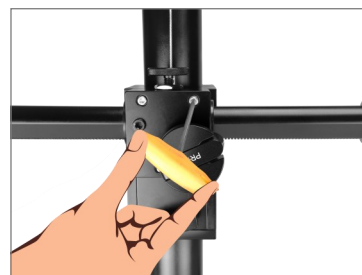
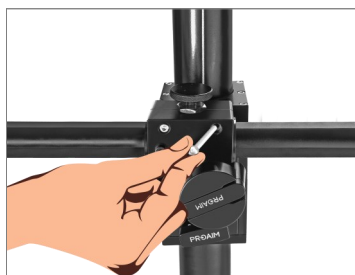


## Camera Support Platform Assembly

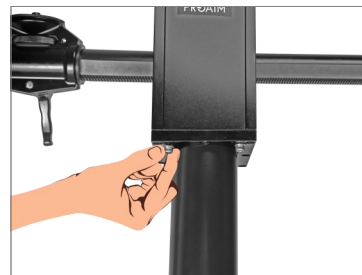
- Attach the support platform to the counterbalanced column of the Cam Tower Stand.



- Secure it using screws and tighten with a 4 mm Allen key.

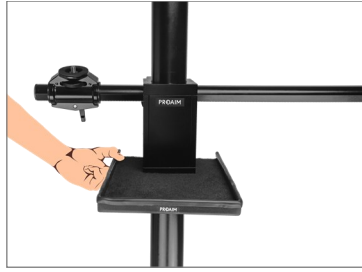


- Remove the screws from the bottom of the counterbalanced column.



## Accessory Tray Mounting

- Position the Accessory Tray onto the counterbalanced column, as shown in the image.
- Secure the tray using screws and tighten with a 4 mm Allen key.



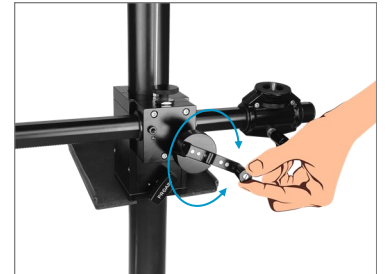
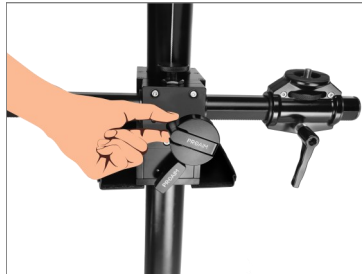
- The tray is now properly attached.

**Feature:** The Cam Tower Stand features a horizontal geared column with a camera head at one end, counterbalanced by weights on the other. Its height and reach can be easily adjusted to achieve the desired shooting position.

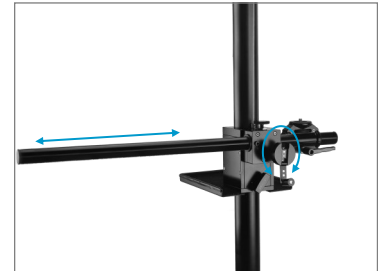


## Camera Support Platform Adjustment

- Open the crank lever on the support platform.



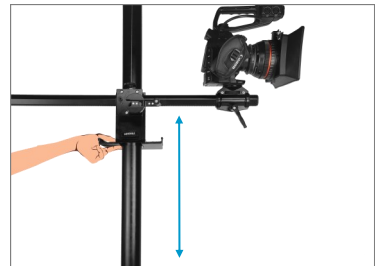
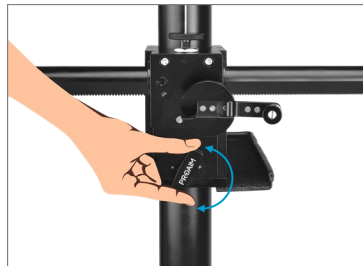
- Rotate the crank to adjust the rod of the support platform as needed.



- Attach camera (**Not included**) to Support platform and secure it with the knob.



- Open the counterbalance knob to adjust the height of the support platform, then close the knob to lock it securely in place.



**YOUR PROAIM CAM TOWER STAND W COUNTERBALANCE  
ALL DRESSED UP AND READY TO GO!**



**(SHOWN WITH OPTIONAL ACCESSORIES)**

**Warranty:** We offer one year warranty for our products from date of purchase. Within this period of time, we will repair it without charge for labor or parts. Warranty doesn't cover transportation costs nor does it cover a product subjected to misuse or accidental damage. Warranty repairs are subjected to inspection and evaluation by us.

**Liability:** We are not liable for damage caused by products that we do not supply or from mishandling in transit, accident, misuse, neglect, lack of care of the product, or service by anyone other than our company.

**Contact Us:** In case of any kind of dissatisfaction, please Contact us immediately and we promise our utmost support and care until you use our product.