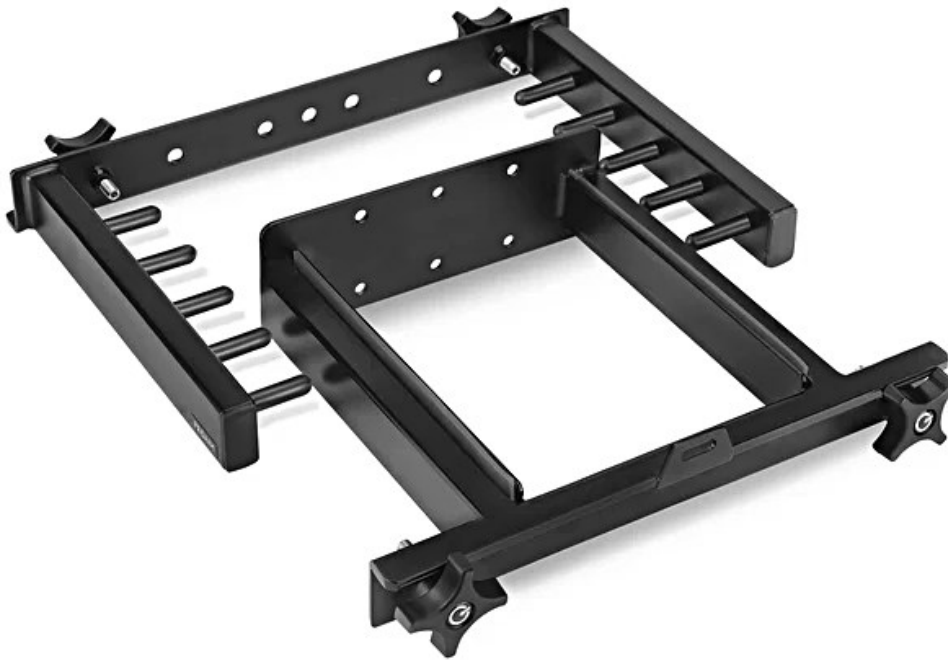




## C-Stand Holder for Proaim Victor & Atlas Camera Production Carts (CT-CSHD-01)



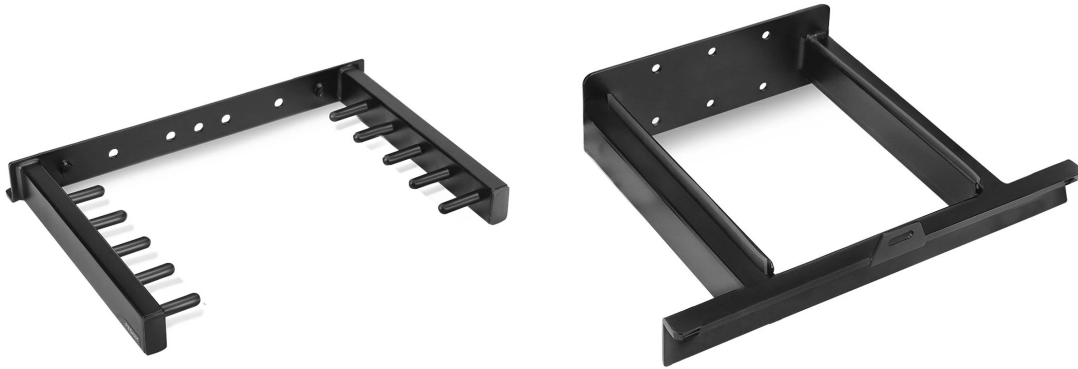
---

All rights reserved.

No part of this document may be reproduced, stored in a retrieval system, or transmitted by any form or by any means, electronic, mechanical, photo-copying, recording, or otherwise, except as may be expressly permitted by the applicable copyright statutes or in writing by the Publisher.

## What's In The Box

Please inspect the contents of your shipped package to ensure you have received everything that is listed below.



C-Stand Holders



2 X Allen Bolts  
(Size: 3/8" x 3/4")



4 X Knobs



2 X Washers



1 X L-Type Allen Key  
(Size: 5/16")

## C-Stand Holders Setup

- Attach the top part of the C-stand holder to the top crossbar of the Victor V1 cart (Not Included).

**NOTE:** The holder consists of two parts - one supports the C-stand legs, and the other secures the riser columns.

- Align the threaded holes with the crossbar, insert the knob, and tighten it securely.
- Repeat the process for the remaining knobs. **Note:** This is compatible with our Proaim Atlas and Victor V1 Cart series.

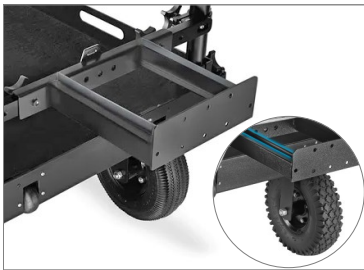
- The top part of the C-stand holder is securely attached to the crossbar.

- Mount the bottom part of the C-stand holder onto the lower crossbar of the cart.

- Insert and tighten the knob for secure the holder firmly.
- Repeat the process for the remaining knobs.

- The bottom part of the C-stand holder is now securely mounted on the crossbar.

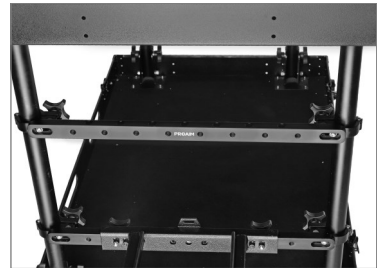
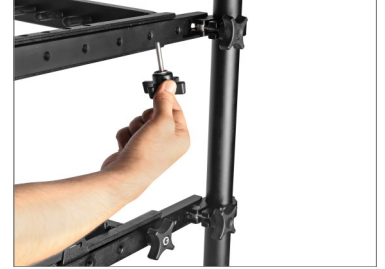
**Note:** Rubber straps are pre-installed on the bottom holder to protect C-stand from scratches and damage.



## Detach the C-Stand Holder

**Note:** To use cheese bar (Not Included), the C-stand holder must be removed.

- Unscrew and remove all knobs securing the holder.
- Gently detach the C-stand holder from the crossbars.



## Detach Screw and Knob – Cheese Bar

- Remove the knob from the cheese bar.
- Knob is now detached from the cheese bar, as shown in the image.
- Use an allen key (Size: 3mm) (Not Included) to remove the screw from the cheese bar.
- Screw is now detached.
- Repeat the above steps on the opposite side of the cheese bar.



- Slide the base clamps onto the long top shelf crossbar.

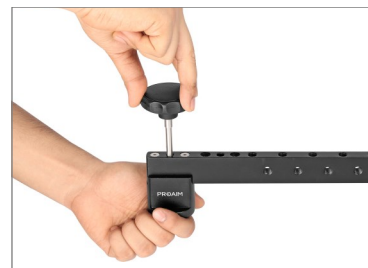


## Cheese Bar Assembly

- Reinsert the screw into the cheese bar using an allen key.
- Repeat on the opposite side.



- Attach the knob to the cheese bar and tighten securely.
- Repeat the same steps on the opposite side.



- The cheese bar is now assembled and ready for use.



## Mount Cheese Bar to Victor V1 Cart

- Remove the existing knobs from the top shelf of the Victor V1 Cart.



- Mount the assembled cheese bar onto the top shelf.



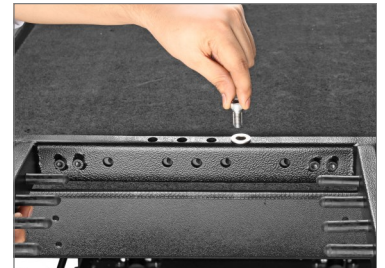
- Tighten the knobs on both ends to secure it firmly.



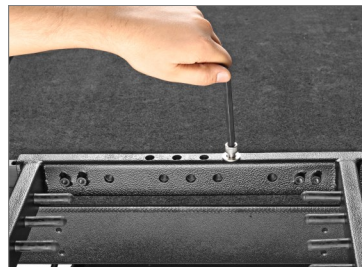
- Position the C-Stand Holder onto the cheese bar.



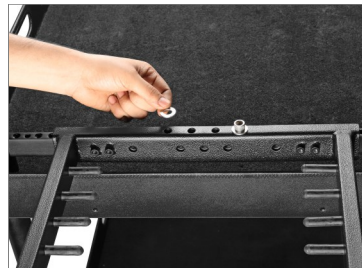
- Place the washers onto the mounting holes of the holder.
- Insert the bolt through the washer into the cheese bar.



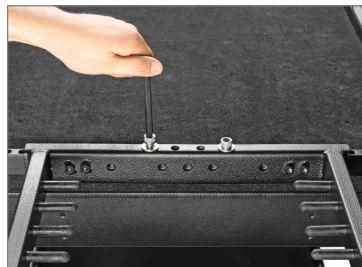
- Tighten the bolt using an allen key (Size: 5/16").



- Repeat the same process on the opposite side of the holder.



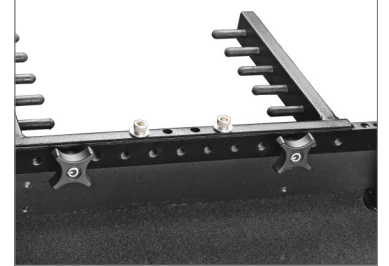
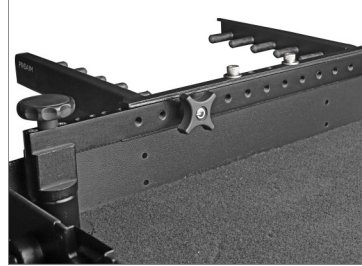
- The C-Stand Holder is now secured with bolts on both sides .



- Insert the knob into the cheese bar and tighten securely.



- Repeat for all remaining knobs.



## C-Stand Mounting

- Place the C-Stands onto the mounted holder.

**NOTE:** It easily accommodates up to four C-stands, from 20" small to 40" full-size stands.



**YOUR PROAIM C-STAND HOLDER FOR PROAIM VICTOR AND  
ATLAS CAMERA PRODUCTION CART ALL DRESSED UP AND READY TO GO!**



**(SHOWN WITH OPTIONAL ACCESSORIES)**

**Warranty:** We offer a one-year warranty on our products from the date of purchase. During this period, we will repair the product free of charge for labor or parts. The warranty does **not** cover transportation costs or products that have been misused or accidentally damaged. All warranty repairs are subject to inspection and evaluation by our team.

**Liability:** We are not liable for any damage caused by third-party products, mishandling during transit, accidents, misuse, neglect, or unauthorized servicing of the product.

**Contact Us:** In case of any dissatisfaction, please contact us immediately. We are committed to providing the utmost support and care to ensure your satisfaction with our product.