

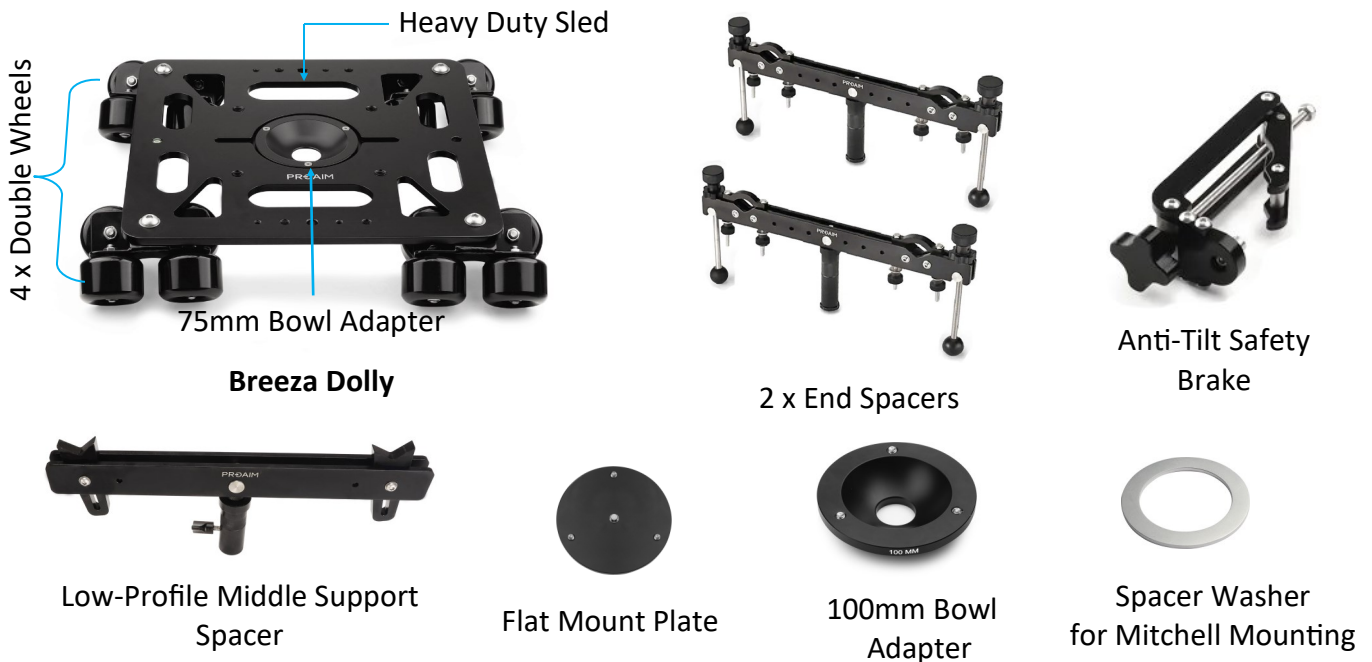
PROAIM Breeza Video/Film Camera Dolly Slider (DL-BRZA-01)

Assembly Manual



What's In The Box

Please inspect the contents of your shipped package to ensure you have received everything that is listed below.



All rights reserved.

No part of this document may be reproduced, stored in a retrieval system, or transmitted by any form or by any means, electronic, mechanical, photo-copying, recording, or otherwise, except as may be expressly permitted by the applicable copyright statutes or in writing by the Publisher.



2 x Wrench
(Sizes: 17 & 13mm)



2 x T- Type Allen Keys
(Sizes: 4mm & 5mm)



Bag Packing

INDEX

Sr. No	Particulars	Page No.
1	End Spacers Assembly	3
2	Breeza Dolly Mounting	4
3	Anti-Tilt Safety Brake Assembly	4-5
4	Mount Fluid Head on the Bowl Adapter	5
5	Flat Mount Plate Mounting	6
6	Spacer Washer Mounting	6-7
7	8ft Track Setup	7
8	Center Support Spacer Mounting	8
9	Underslung Camera Setup	9

Breeza Video/Film Camera Dolly Slider Setup

End Spacers Assembly

- Loosen the knobs of the clamp and then slide up the clamp to easily fit the track.



- Insert a 4ft track into the clamp.
- Once the track is properly fitted into the clamp, tightly secure it with the knob, as shown in the image.



- The same process is to be followed for the other track.

NOTE: It comes with track-ends for overall secure and smooth track running.



- The height of the end feet of the end spacers can be adjusted according to your setup requirement with the help of a knob.



- The end feet can be used in both, Hi-Hat and Low-Hat mode accordingly.



Breeza Dolly Mounting

- Now place the breeza dolly onto the 4ft track.
- The handles part of the dolly platform should be inside of the track as shown. Make sure all wheels are aligned correctly on the track and dolly runs smoothly.



Anti-Tilt Safety Brake Assembly

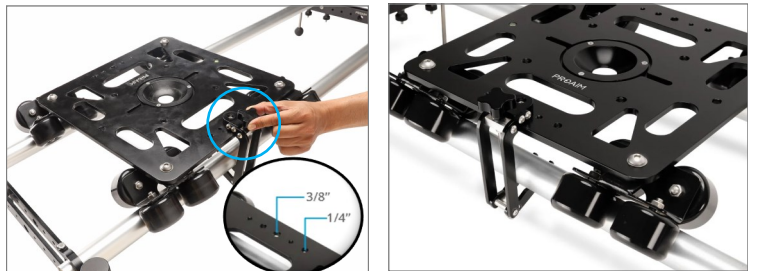
- Loosen the knob to properly open the safety brake.



- Mount the Safety Brake on side of the Breeza dolly platform.
- Adjust the position of the bracket so it goes under the track to prevent the platform from tilting out.



- Properly secure with a knob after mounting the safety brake.
- Follow the same process on the other side.



- The dolly platform already has a 75mm bowl adapter mount. To mount a 100mm bowl, first loosen the screws using an Allen key and remove the 75mm bowl.

NOTE: The Breeza dolly platform is designed with a Bowl mount 75mm, 100mm, and an flat base mount.

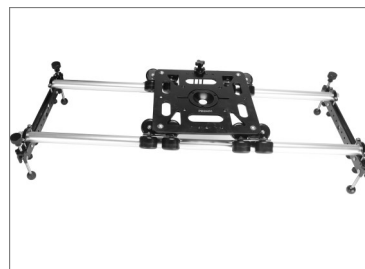


- Now mount a 100mm bowl adapter.
- Then insert the screws and properly secure the adapter with the help of an Allen key.



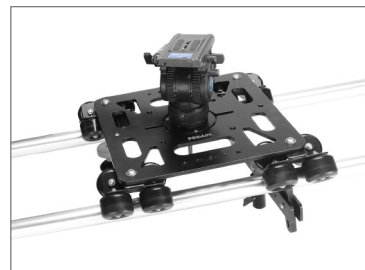
- The 100mm bowl adapter is mounted on the dolly platform, as shown in the image.

NOTE: It has a 16-wheel design with floating trucks that gives smooth, squeak-free move on a straight or curved track.



Mount Fluid Head on the Bowl Adapter

- Mount the fluid head (**Not Included**) into the bowl through a screw.



- After mounting the fluid head on the bowl, secure it properly by inserting the locking knob from the bottom side.



- After mounting the fluid head mount a camera (**Not Included**) on it.

NOTE: Breeza Dolly Slider is sturdy enough to take a massive payload. And the end-clamps mount tripods and light stand in seconds.



Flat Mount Plate Mounting

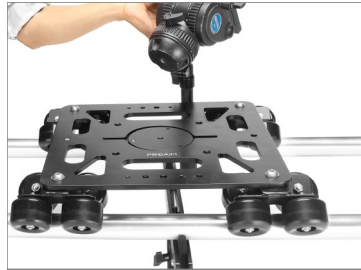
- To mount the flat plate, first remove the 100mm bowl adapter from the dolly platform.
- For this, use an Allen key, loosen all the screws and then take out the 100mm bowl adapter.



- Mount the flat plate on the dolly platform.
- Then insert the screws by aligning to the bottom and properly tighten.



- Mount the fluid head (**Not Included**) onto the flat plate and to properly secure.
- Insert a bolt from the middle/center of the bottom, as shown in the image.



- After properly securing the fluid head mount a camera (**Not Included**) on it.



Spacer Washer Mounting

NOTE: When using the Mitchell mounting, such as a riser, if the plate's thickness is insufficient, we will use the Spacer washer.

- Spacer Washer reduces the gaping of the whole size of dolly platform.

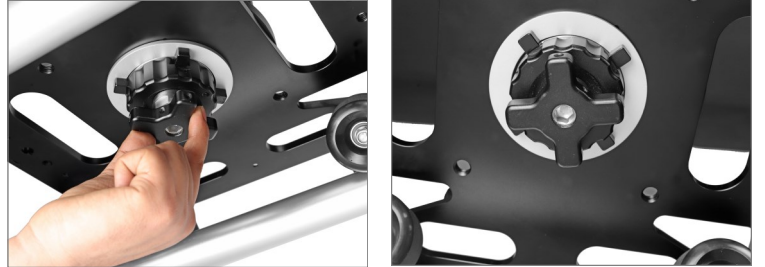
- Loosen the castle nut of height riser (**Not Included**) and mount it onto the dolly.



- Then attach the Spacer Washer from bottom side and rotate the castle nut to lock the spacer washer.



- Then tighten the knob to secure it.
- The Spacer washer is properly attached.



- Then lock the height riser by lever.
- Your fluid head is properly mounted on dolly platform.



- Mount fluid head and camera on it.
- Now your setup is ready to use.

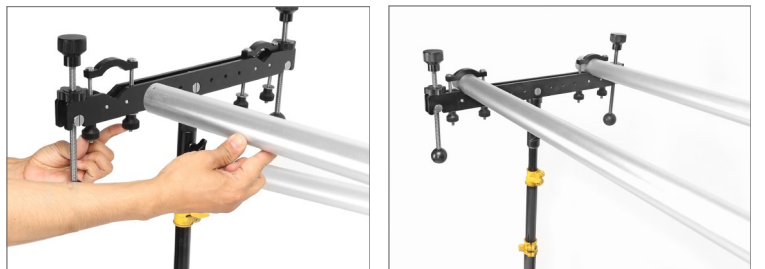
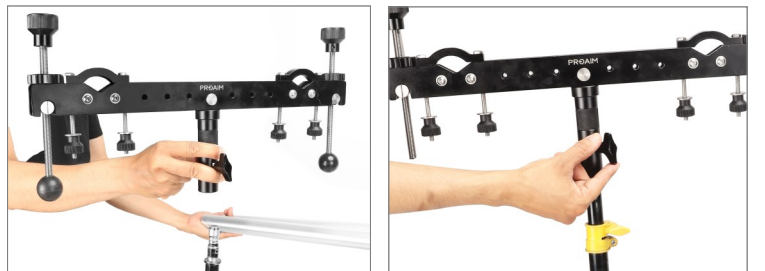


8ft Track Setup

- Mount the end spacers onto the stand **(Not Included)** and tighten with the help of a knob.

NOTE: If you need higher level shots, then you can put end spacers on Stands.

- Insert an 8ft track into the clamp.
- Once the track is properly fitted into the clamp, secure it with the help of a knob, as shown in the image.
- Follow the same process on the other side.



Center Support Spacer Mounting

- Mount the Centre Support Spacer onto the stand.
- After mounting the spacer onto the stand (**Not Included**), properly secure it with a knob.



- Attach the center Support spacer under the center of the track system help of a Support stand (**Not Included**).



- The 8ft track is now mounted on the center support spacer.



- Now place the breeza dolly onto the 8ft track.
- The handles part of the dolly platform should be inside of the track as shown.

NOTE: Make sure all wheels are aligned correctly on the track and dolly runs smoothly.

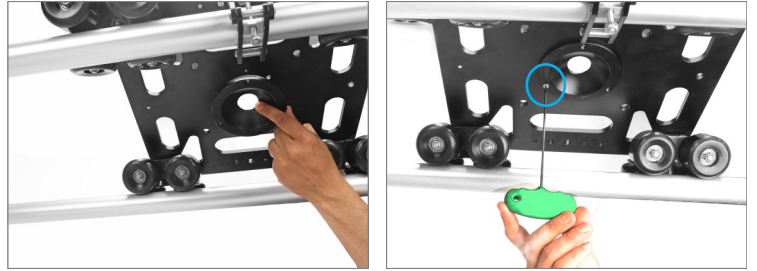


- Mount the Safety Brake on side of the Breeza dolly platform.
- Adjust the position of the bracket so it goes under the track to prevent the platform from tilting out.

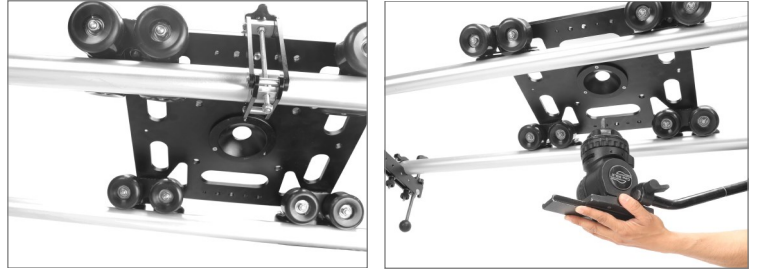


Underslung Camera Setup

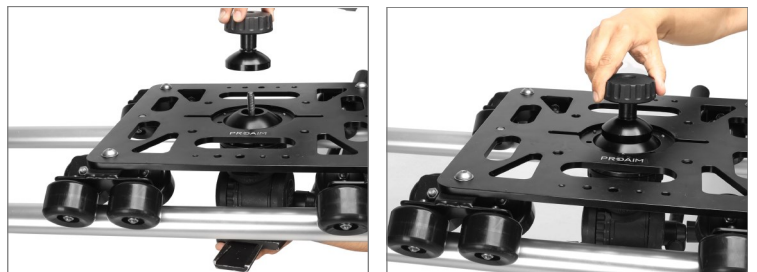
- To mount the camera underslung, attach the bowl adapter aligning the bottom threads, then insert the screws and properly tighten using an Allen key.



- Then attach the fluid head to the bowl adapter, as shown in the image.



- To secure the fluid head from the bottom, insert the locking knob from the top and secure it properly.



NOTE: The whole dolly system is Quick & Easy to Set up for a steady workflow. It saves a lot of your valuable production time.



**YOUR PROAIM BREEZA VIDEO/FILM CAMERA DOLLY SLIDER WITH TRACK ENDS
ALL DRESSED UP AND READY TO GO!**



(SHOWN WITH OPTIONAL ACCESSORIES)

Warranty: We offer one year warranty for our products from date of purchase. Within this period of time, we will repair it without charge for labor or parts. Warranty doesn't cover transportation costs nor does it cover a product subjected to misuse or accidental damage. Warranty repairs are subjected to inspection and evaluation by us.

Liability: We are not liable for damage caused by products that we do not supply or from mishandling in transit, accident, misuse, neglect, lack of care of the product, or service by anyone other than our company.

Contact Us: In case of any kind of dissatisfaction, please Contact us immediately and we promise our utmost support and care until you use our product.