

# PROAIM

## 7' Wave-2 Jib Crane for Camera (P-WV-2)



---

All rights reserved.

No part of this document may be reproduced, stored in a retrieval system, or transmitted by any form or by any means, electronic, mechanical, photo-copying, recording, or otherwise, except as may be expressly permitted by the applicable copyright statutes or in writing by the Publisher.

## ■ What's In The Box

Please inspect the contents of your shipped package to ensure you have received everything that is listed below.



7' Wave Jib Crane with 100mm Bowl



100mm Bowl



Flat Base Plate



75 mm Conversion Ring



2 x Ratchet Knobs



2 x Weight Closers



Weight Rod



Knob



2 x Allen Keys  
(T-Type Sizes: 4mm)  
(L-Type Sizes: 3/16")



Storage Bag

# INDEX

<b>Sr. No</b>	<b>Particulars</b>	<b>Page No.</b>
1	Jib Section Assembly	4-6
2	75mm Conversion Ring Setup	7
3	100mm Bowl Setup	7-8
4	Flat Base Plate Setup	8-9
5	Balancing Tips	10
6	Final Setup	10

## Camera Jib Setup

### Jib Section Assembly

- Open the first section of the Camera plate adjustment rod.
- Now, align both the Camera plate adjustment rod sections as shown in the image.



- Connect the first section of the Camera plate adjustment rod with the second section.

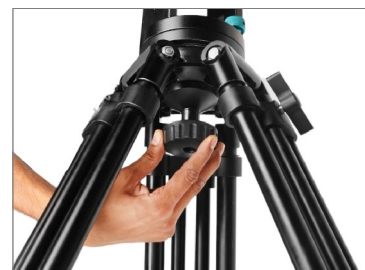


- Then, tighten the ratchet knobs for secure attachment.



**NOTE:** Ensure the central fork is properly seated in the tripod bowl, maintaining a perpendicular position, as any off-axis installation can hinder the jib's movement. During installation, the arm will be front-heavy; therefore, use a grip stand or have an assistant hold the camera end to prevent it from falling. Similarly, when mounting the camera, you may need a grip stand or assistance at the rear of the jib to ensure stability and prevent any mishaps. These steps will help ensure a secure and stable setup for optimal performance and safety.

- Insert the central fork of the Jib arm into the bowl of the tripod stand (**Not Included**) and secure it using the locking knob.

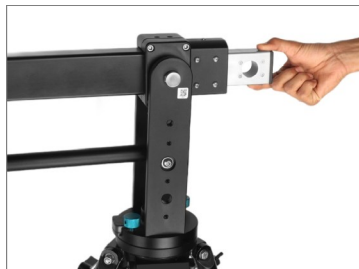


- Now, your Wave jib is securely mounted on the tripod stand.
- Loosen the Allen bolts using the Allen key 3/16 to extend the Telescopic weight section of jib.

**Feature:** The well-built pan knobs control the panning of the Jib. Built-in bubble leveler allows for fast, accurate set up on uneven surfaces.



- Once loosened, extend the telescopic weight section.



- Insert the Weight rod into the weight section.
- Put the weight (Not Included) on the weight Rod.



- After adding weight, insert a weight closure to secure the weight from falling.

**NOTE:** Please ensure that the opposite end of the jib arm is properly secured to prevent any sudden upward movement when additional weights are added. This measure is essential to maintain stability and safety during operation.



## Comfortable Shooting in Wide/Narrow Spaces

### Telescopic Design



### 3 Mounting Options

Adapts Various Camera Heads

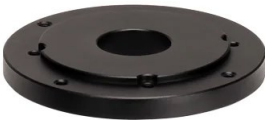
75mm  
conversion Ring



100mm  
conversion Ring



Flat Base Plate



## 75mm Conversion Ring Setup

**NOTE:** Wave jib has a 100mm bowl attached to its Camera plate.

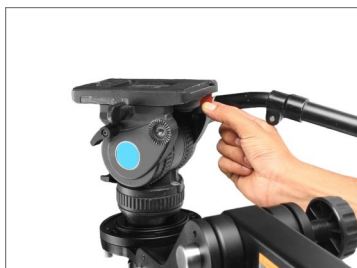
- Attach the 75mm conversion ring to the 100mm bowl.



- Now, mount the 75mm Fluid head (Not Included) on the Conversion ring and secure it using the locking knob.



- Unlock the Red knob and mount the Camera (Not Included) on the fluid head.



- Your Camera is now securely mounted on the fluid head.



## 100mm Bowl Setup

- Mount the 100mm Fluid head (Not Included) on the 100mm bowl and secure it using the locking knob.



- Remove the Quick release plate (Not Included) from the Fluid head.
- Carefully slide the camera on the Fluid head.



- The Camera is now securely mounted on the fluid head.
- The setup is ready to use.



- To remove the 100mm bowl, loosen the Allen bolt and remove it.



- The bowl has been removed as shown in the pictures.



## Flat Baseplate Setup

**NOTE:** Remove the 100mm Bowl before mounting the Flat baseplate.

- Remove the bolts and attach the Flat Baseplate to the bottom of the camera mount.

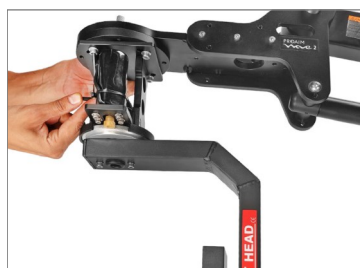


- Now, insert the bolts as shown in the image.

**NOTE:** Attach the flat base plate to the bottom of the camera mount for the underslung camera setup.



- Attach the Sr. Pan-Tilt head (**Not Included**) to the Flat base plate by inserting the bolts and securing them using the 3/16 Allen key.
- Now, mount the Camera on the camera plate and secure it with the check nut.



- The Camera is now securely mounted on the Sr. pan tilt head.
- Attach the 4-pin male connector of Cable to 4-pin female connector of Head for Panning & Tilting.
- Attach the joystick box by sliding it onto the weight rod (**Not Included**) and then securely tighten it using the provided knob.



## Professional & Versatile Design

Adapts Direct Camera Mounting, Gimbals & Pan Tilts

**NOTE:** Jib Section is adjustable, so the balancing chart is flexible, not exact.

## Balancing Tips :

<b>Self Balance</b>		
<b>Length</b>	7 ft	4.10 ft
<b>Weight</b>	2.48 kg	33.45 kg
<b>Camera Weight</b>		<b>Counter Balance</b>
<b>Length</b>	7 ft	4.10 ft
1 Kg	3.74 kg	43.32 kg

**YOUR PROAIM 7' WAVE-2 JIB CRANE FOR CAMERA  
ALL DRESSED UP AND READY TO GO!**



(SHOWN WITH OPTIONAL ACCESSORIES)

**Warranty:** We offer one year warranty for our products from date of purchase. Within this period of time, we will repair it without charge for labor or parts. Warranty doesn't cover transportation costs nor does it cover a product subjected to misuse or accidental damage. Warranty repairs are subjected to inspection and evaluation by us.

**Liability:** We are not liable for damage caused by products that we do not supply or from mishandling in transit, accident, misuse, neglect, lack of care of the product, or service by anyone other than our company.

**Contact Us:** In case of any kind of dissatisfaction, please Contact us immediately and we promise our utmost support and care until you use our product.