

PROAIM

3ft Overhead Platform for Camera & Studio Lights (P-OHCP-01)



All rights reserved.

No part of this document may be reproduced, stored in a retrieval system, or transmitted by any form or by any means, electronic, mechanical, photo-copying, recording, or otherwise, except as may be expressly permitted by the applicable copyright statutes or in writing by the Publisher.

What's In The Box

Please inspect the contents of your shipped package to ensure you have received everything that is listed below.



1 x Cross Bar



2 x Foot Joints



2 x Side bar



1 x Camera Mount



4 x Support bar



2 x L Bracket



9 x Short Thumb Screws
(1/4" x 15mm)



2 x Knob with Washer



4 x Short Thumb Screws
(5 x 9.5mm)



4 x Short Thumb Screws
(5 x 15mm)



2 x Plastic Clips

3ft Overhead Platform Setup

- Slide a Side Bar onto a Foot Joint until seated. Secure the Side Bar to the foot using a foot thumb screw (1/4" × 15 mm) .



- Repeat the steps for the second foot assembly.



Support Bar Assembly

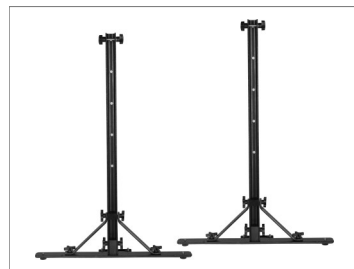
- Attach the Support Bar to the Side Bar using a short thumb screw (5 × 15mm) .



- Secure the bottom of the Support Bar to the foot using the short thumb Screw (5x 9.5mm) .

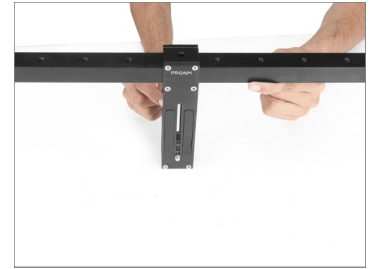


- Repeat for the other Support Bar assembly.



Camera Mount Assembly

- Slide the Camera Holder onto the Cross Bar.



- Adjust the Cross Bar height along the Side Bars as required. Lock the Cross Bar in place using the Two Height Adjustment Thumb Screws (1/4" x 15mm).

Note: Camera Platform can slide along the crossbar to suit your setup.



Cross Bar Assembly

- Attach the cross Bar with Side Bars as shown in the image.

Note : The Cross Bar is fully adjustable up or down and mounts easily using the rosette knobs. The Camera Holder with a 1/4"-20 screw can be locked at any position along the Cross Bar.



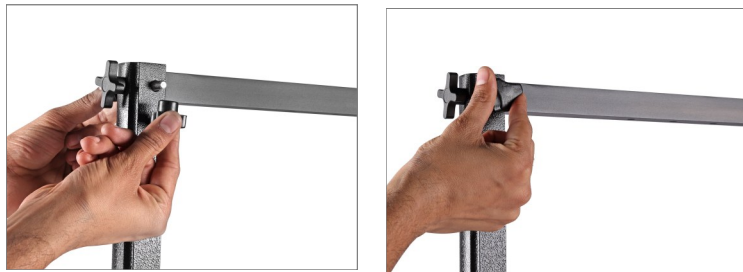
- To secure the Cross Bar, insert and tighten the (1/4"x14mm) Foot Thumb screw on one side.



- To secure the cross bar, insert the knob on the side.



- Repeat on the other side to fully lock the Cross Bar in place.

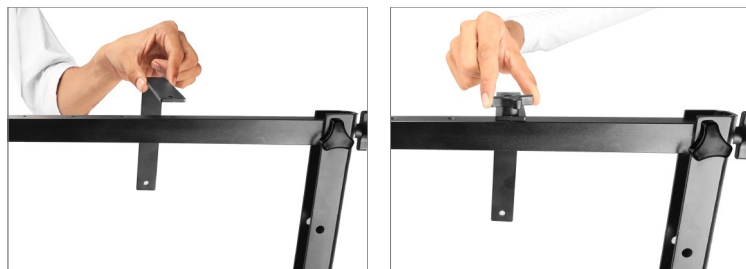


- Adjust the height of the Cross Bar as needed to suit your shooting setup.



L-Bracket Assembly

- Attach the two L-Brackets to the Cross Bar using the Thumb Screws.



- Ensure both L-Brackets are firmly secured.



- Clip your backdrop to the L-Brackets using the two Plastic Clips.

NOTE: Backdrops and other accessories are not included with the Overhead Camera Platform



**YOUR PROAIM 3FT OVERHEAD PLATFORM FOR CAMERA & STUDIO LIGHTS
ALL DRESSED UP AND READY TO GO!**



(SHOWN WITH OPTIONAL ACCESSORIES)

Warranty: We offer a one-year warranty for our products from the date of purchase. Within this period of time, we will repair it without charge for labor or parts. Warranty doesn't cover transportation costs, nor does it cover a product subjected to misuse or accidental damage. Warranty repairs are subject to inspection and evaluation by us.

Liability: We are not liable for damage caused by products that we do not supply or from mishandling in transit, accident, misuse, neglect, lack of care of the product, or service by anyone other than our company.

Contact Us: In case of any kind of dissatisfaction, please contact us immediately, and we promise our utmost support and care until you use our product.