

# PROAIM

## 10' Wave-2 Jib Crane, Dolly Stand for Camera (P-WV-2PL-SD)



---

All rights reserved.

No part of this document may be reproduced, stored in a retrieval system, or transmitted by any form or by any means, electronic, mechanical, photo-copying, recording, or otherwise, except as may be expressly permitted by the applicable copyright statutes or in writing by the Publisher.

## What's In The Box

Please inspect the contents of your shipped package to ensure you have received everything that is listed below.



10' Wave Jib Crane with 100mm Bowl



Weight Rod



2 x Knobs



100mm Bowl



Flat Base Plate



75 mm Conversion Ring



2 x Weight Closers



2 x Ratchet Knobs with Washers



2 x Allen Keys  
(T – Type Sizes: 4mm)  
(L-Type Sizes: 3/16mm)



Storage Bag

# CST-100 Tripod Stand , Spreader & Portable Dolly



CST-100 Tripod Stand



Portable Dolly



Aluminum Spreader



Storage Bag

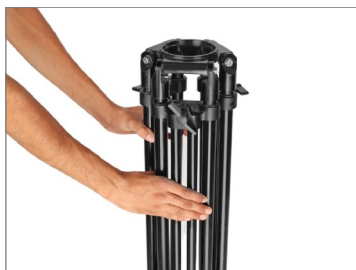
# INDEX

Sr. No	Particulars	Page No.
1	CST-100 Tripod Stand Assembly	5
2	Aluminum Tripod Spreader	6
3	Portable Dolly Assembly	7
4	CST-100 Stand Mounting on Dolly	8
5	Jib Section Assembly	8-10
6	Jib mounting on Tripod Stand	10-11
7	Weight Rod & Weight Mounting	12
8	100mm Bowl setup	13
9	75mm Conversion Ring	13-14
10	Flat Base Plate Setup	14-15
11	Sr. Pan-Tilt Head <b>(Not Included)</b> Mounting	15-16
12	Balancing Tips	16
13	Final Setup	17

## ■ Camera Jib Setup

### CST-100 Tripod Stand Assembly

- Stretch and open the legs of the tripod to set it up.



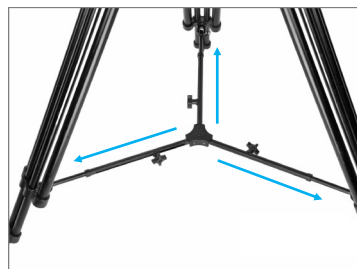
- To adjust the height, loosen all three adjustment knobs. Set the tripod to your desired height, then re-tighten the knobs to secure it.



**NOTE:** The tripod height ranges from 34" to 60", allowing easy adjustments for the perfect perspective.



- Loosen the spreader knobs to extend the stand legs.

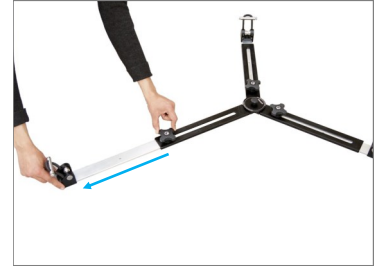


- Once the legs are spread, re-tighten all knobs to secure them in place.



## Aluminum Tripod Spreader

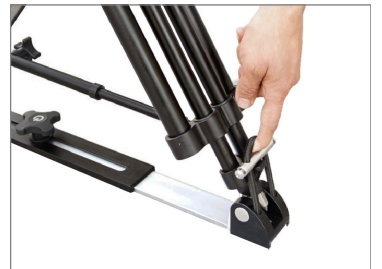
- Lay the spreader flat on the floor. Loosen the knob to extend the length of the feet, then re-tighten the knob to secure them at the desired length.



**Feature:** Each leg has adjustable knobs for stable height adjustments.



- Place the tripod stand onto the spreader and lock it in place using the rubber grips.



- Your 100mm Camera Tripod Stand is securely mounted on the Spreader.



### Different Shooting Modes

#### Easy Height Adjustment

## Portable Dolly Assembly

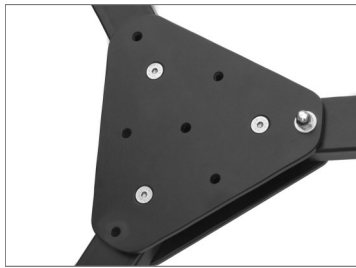
- Using a 13mm spanner, loosen the side bolt of the Portable Dolly.



- Remove the nut, washer, and Bolt.



- Repeat the same process to remove the side bolts from the remaining sides of the Dolly.



- Unfold and stretch out the Dolly legs to Open it fully.



- Once opened, re-insert the bolts along with the washers and bolt nuts.



- Tighten the Bolt nut securely using the 13mm spanner.

**NOTE:** The center bolts will not be removed while opening the Dolly.



## CST-100 Stand Mounting on Dolly

- Place the tripod feet on the Dolly and secure them using the elastic clips.



- Press the clamps to lock the wheels at a static position.



**Feature:** The Tripod with Spreader provides immense support with an incredible payload of up to 80kg / 176lb, ensuring your setup is highly stable and secure.



## Jib Section Assembly

- Begin by opening the first section of the camera plate adjustment rod.



- Next, open the camera plate, as shown in the image.



- Loosen the Allen bolts on the jib arm using a 3/16 Allen key.



- Extend, the front telescopic post as needed.



- Loosen the Allen bolts using the 3/16 Allen key to extend the telescopic weight section of the jib.



- Connect the first section of the adjustment rod to the second section.



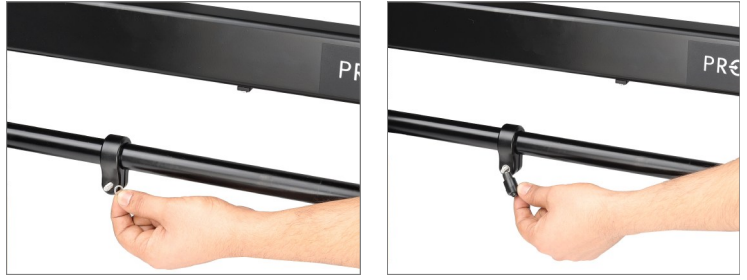
- After connecting both sections, insert the washer.



- Insert the ratchet knob and secure both sections tightly.



- For double locking, repeat the process: insert a washer followed by a ratchet knob, as shown in the image.



- Finally, ensure everything is tightly secured by firmly tightening the Ratchet Knobs.



**NOTE:** Ensure that the central fork is properly seated in the tripod bowl, maintaining a perpendicular position. Any off-axis installation can hinder the jib's movement. During installation, the arm will be front-heavy; therefore, use a grip stand or have an assistant hold the camera end to prevent it from tipping forward. Likewise, when mounting the camera, support may be required at the rear of the jib either with a grip stand or an assistant—to maintain stability and avoid accidents. Following these steps will help ensure a secure, stable setup for optimal performance and safety.

## Jib Mounting on Tripod Stand

- Loosen and remove the locking knob from the central fork of the jib arm.



- Insert the central fork of the jib arm into the tripod bowl.



- After installing the central fork, secure the jib by tightening the locking knob firmly.



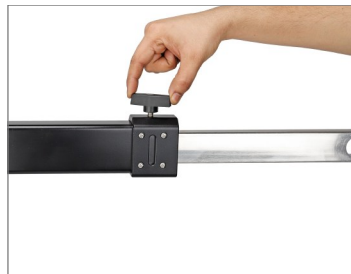
**Feature:** The well-built pan knobs control the panning of the Jib. Built-in bubble level allows for fast, accurate setup on uneven surfaces. And experience seamless panning with premium roller bearings that deliver smooth, fluid motion every time.

- Use the 3/16" Allen key to loosen the Allen bolts on the telescopic weight section.
- Extend the section once the bolts are loosened.



**NOTE:** There are 2 ways to extend the telescopic using a screw or a knob.

- Loosen and remove the screw, then insert the knob into it.
- Tighten the knob securely as shown in the image

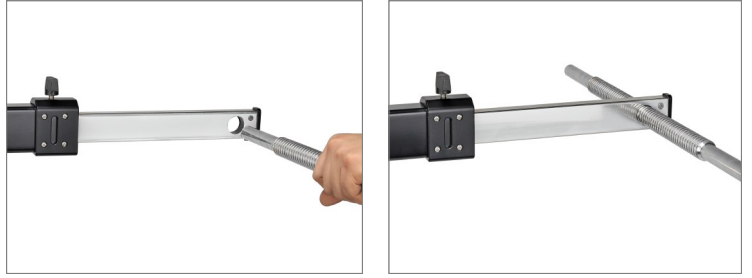


### Comfortable Shooting in Wide/Narrow Spaces Telescopic Design

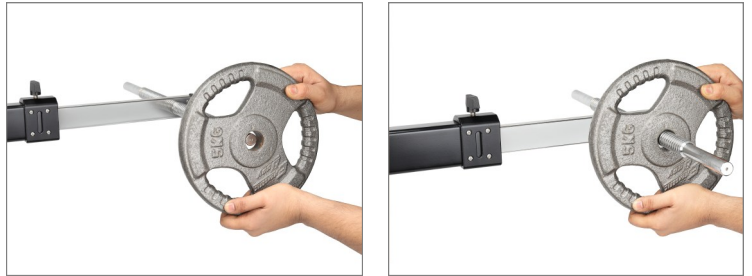


## Weight Rod & Weight Mounting

- Insert the Weight rod into the weight section of the jib.

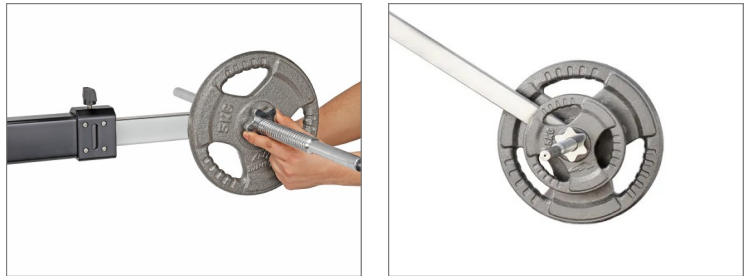


- Slide the weights (Not Included) onto the weight Rod.



- After adding the weight, insert the weight closure to prevent them from sliding off.

**NOTE:** It's crucial to ensure that the opposite end of the jib arm is correctly secured to prevent any sudden upward movement when adding additional weights.



## 100mm Bowl Setup

**NOTE:** The Wave Jib has a 100mm bowl attached to its camera plate.

- Loosen the locking knob on the 100mm fluid head (**Not Included**).



- Detach the locking knob and mount the 100mm fluid head (**Not Included**) onto the 100mm bowl.



- Reinsert and tighten the locking knob to secure the head.
- Carefully slide the Camera (**Not Included**) onto the Fluid head.



- Tighten the knob to secure the camera in place.
- The Camera is now securely mounted onto the Fluid head.



## 75mm Conversion Ring Setup

- Attach the 75mm conversion ring to the 100mm bowl.



- Loosen and remove the locking knob from the 75mm fluid head (**Not Included**).



- Mount the 75mm fluid head **(Not Included)** onto the 75mm bowl. Secure it using the locking knob.



- Mount the camera **(Not Included)** onto the fluid head, and press the red knob to secure Camera in position.



- Your Camera is now securely mounted on the Fluid head.



## Flat Baseplate Setup

- Loosen and remove the Allen bolts to detach the 100mm bowl.



- Remove the bowl completely.



- Using the Allen key, remove all bolts from the camera mount.



- Align and attach the Flat Baseplate at the bottom of the camera mount.



- Insert and tighten all bolts securely.



## Sr. Pan-Tilt Head **(Not Included)** Mounting

- Attach the Sr. Pan-Tilt head **(Not Included)** to the Flat base plate by inserting the bolts.



- Tighten all bolts securely using an Allen key. Then, mount the camera onto the camera plate of the Pan-Tilt Head.



- Use the check nut to secure the camera.



- For added safety, tighten the upper part of the check nut as well.
- The Camera is now securely mounted on the Sr. Pan-Tilt head.



**NOTE:** Attach the flat base plate to the bottom of the camera mount for underslung Camera setup.



**Professional & Versatile Design**  
Adapts Direct Camera Mounting, Gimbals & Pan Tilts

**Balancing Tips :**

Camera Weight	15kg	20kg	25kg
Counter Balance	30kg	40kg	50kg
Measured Length	305cm	259cm	208cm
Length from U Fork to Camera Plate	201cm	172cm	143cm

**NOTE:** The counterweight required to balance the jib will be approximately twice the weight of the camera setup. However, if the jib sections are collapsed, it may require fewer counterweights than is usually needed to balance the jib.

**YOUR PROAIM 10' WAVE-2 JIB CRANE, DOLLY STAND FOR CAMERA  
ALL DRESSED UP AND READY TO GO!**



**(SHOWN WITH OPTIONAL ACCESSORIES)**

**Warranty:** We offer one year warranty for our products from date of purchase. Within this period of time, we will repair it without charge for labor or parts. Warranty doesn't cover transportation costs nor does it cover a product subjected to misuse or accidental damage. Warranty repairs are subjected to inspection and evaluation by us.

**Liability:** We are not liable for damage caused by products that we do not supply or from mishandling in transit, accident, misuse, neglect, lack of care of the product, or service by anyone other than our company.

**Contact Us:** In case of any kind of dissatisfaction, please Contact us immediately and we promise our utmost support and care until you use our product.