

Assembly Manual**■ What's In The Box**

Please inspect the contents of your shipped package to ensure you have received everything that is listed below.



Camera Base with Quick Release



Cage Top Plate

3 x Accessory
Mounting Adapter

2 x Side Handles



Top Handle

2 x 300mm Female
Threaded Rods3 x 250mm Male/
Female Threaded Rods
(3 x 100 & 3 x 150mm)

4 x Washers



3/16 (L-Type) Allen Key

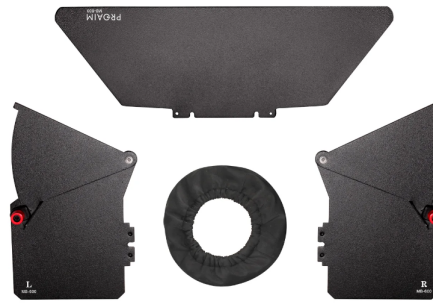
2 x 200mm Female
Threaded Rods2 x 70mm
Solid Rods

All rights reserved.

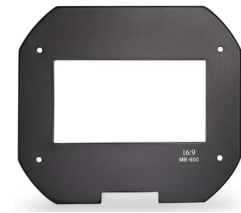
No part of this document may be reproduced, stored in a retrieval system, or transmitted by any form or by any means, electronic, mechanical, photo-copying, recording, or otherwise, except as may be expressly permitted by the applicable copyright statutes or in writing by the Publisher.



MB-600 Sunshade Matte Box with 4.3 Format Mask, 2pc of Rotating 4x4 Filter Holder, Front Adjuster with 15mm Rod Clamp



Top Flag & Side Flags with Knicker



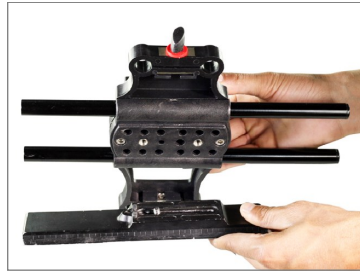
16:9 Format Masks



2 x (1.5mm), (2.5mm) Allen Keys

■ Camera Cage Setup

- Insert the 300mm female threaded rod into the camera base and tighten with Allen key.
- Attach the quick release adapter base with the quick release plate of your tripod and tighten the bolt to secure properly.
- Now mount the base plate on your fluid head and secure it properly with the help of knob.
- Now loosen the knob and pressing the pin to remove the quick release plate.



- Attach the camera with quick release plate and tighten the bolt to secure properly. Now mount the camera onto the Base plate and tighten the knob to secure it.



- Attach the 250mm Threaded Rods on the cage base plate and tighten the knob to secure properly.



- Attach the Accessory mounting bracket and tighten with the Allen key.



- Now insert 70mm Solid rod to attach the accessory mounting adapter and tighten it to secure it.



- Attach the one side handle & tighten the knob. For other handle you should insert 70mm Solid rod.



- Attach the cage top plate and tighten with the knob.



- Now loosen the top plate with the help of Allen key and insert 200 mm female rod inside the cage top plate as shown in the image.



- Now attach the top handle and tighten the knob to secure it properly.



**YOUR FILMCITY POWER DSLR CAMERA CAGE
ALL DRESSED UP AND READY TO GO!**



(SHOWN WITH OPTIONAL ACCESSORIES)

Matte Box Setup

- Insert french flag to top of Matte Box and tighten it with screws. In the same way, insert side flags into the slots provided on both sides and secure them with screws.



NOTE: If the french flag remains loose even after tightening the knob, then slightly tighten the allen bolt as shown.

- Now wrap Knicker on conversion ring of Matte Box, as shown.



YOUR MB-600 CAMERA SUNSHADE MATTE BOX ALL DRESSED UP AND READY TO GO!



(SHOWN WITH OPTIONAL ACCESSORIES)

Warranty: We offer one year warranty for our products from date of purchase. Within this period of time, we will repair it without charge for labor or parts. Warranty doesn't cover transportation costs nor does it cover a product subjected to misuse or accidental damage. Warranty repairs are subjected to inspection and evaluation by us.

Liability: We are not liable for damage caused by products that we do not supply or from mishandling in transit, accident, misuse, neglect, lack of care of the product, or service by anyone other than our company.

Contact Us: In case of any kind of dissatisfaction, please Contact us immediately and we promise our utmost support and care until you use our product.